

MOTOR	
FRAME SIZE	OUTPUT (kW)
71M	0.55

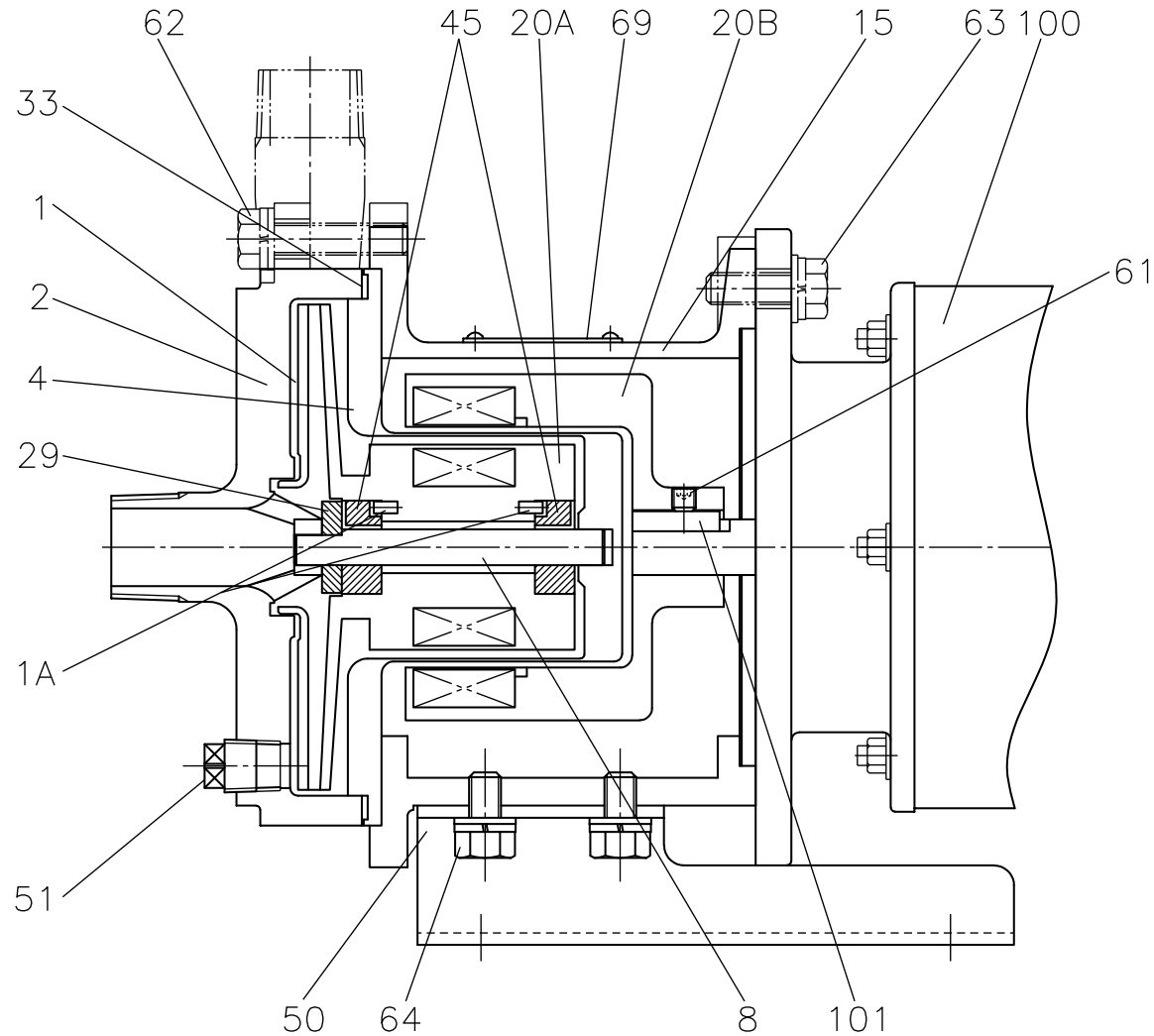
MASS APPROX (kg)		
PUMP	MOTOR	TOTAL
11	6.5	17.5

REV.	
APP'D	T.Shimayoshi
CHIEF	CH. M.Murakami
CH'D	M.Murakami
DATE	2020.03.30

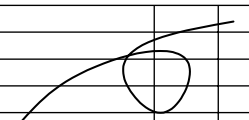
PUMP CODE	
MMP21-B66	
MAGNETIC DRIVE	
CENTRIFUGAL PUMP	
OUTLINE DIMENSIONS	
3rd ANGLE PROJECTION	SCALE $\times$
SANWA HYDROTECH CORP.	

WORK No.	
QTY.	
DWG.No.	MMP21-B66-X
REV.	1

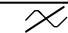
承	
資	
品	1
機	
組	1
控	
計	



101	COUPLING KEY	S45C	1		
100	MOTOR	-	1		
69	NAME PLATE	SUS304	1		
64	HEXAGON HEAD BOLT	SUS304	4 <sup>s</sup>		with WASHER
63	HEXAGON HEAD BOLT	SUS304	4 <sup>s</sup>		with WASHER
62	HEXAGON HEAD BOLT	SUS304	8 <sup>s</sup>		with WASHER
61	SET SCREW	SCM435	1		
51	PLUG	SUS316	1		
50	BASE	SUS304	1		
45	BUSHING	SiC-D	2		
33	GASKET	PTFE	1		φ125xφ136x1.5t
29	THRUST RING	SiC	1		
	MAGNET	RARE EARTH	1 <sup>s</sup>		
20B	MAGNET COUPLING(M)	FCD	1		R25x6N
15	FRAME ADAPTER	FC200	1		
8	SHAFT	SiC	1		
4	REAR CASING	SUS316	1		
2	CASING	SCS14	1		
	MAGNET	RARE EARTH	1 <sup>s</sup>		
20A	MAGNET COUPLING(P)	SUS316	1		R25x6N
1A	PIN	SUS316	2		
1	IMPELLER	SCS14	1		
MARK	NAME OF PART	MAT'L	USE SPARE No. REQ'D	WT.	REMARK.

		
NAME OF PART	MAT'L	QTY.
ACCESSORIES		

REV.	
▲2021.08.10 A.F	
APP'D	T.Shimayoshi
CH.	A.Endo
CHIEF	M.Murakami
DWN.	M.Murakami
CH'D	S.Okamoto
DATE	2020.03.31

PUMP CODE	
MMP21-B66	
MAGNETIC DRIVE CENTRIFUGAL PUMP	
SECTIONAL DRAWING	
3rd ANGLE PROJECTION	SCALE 
SANWA HYDROTECH CORP.	

WORK No.	
QTY.	
DWG.No.	REV.
MMP21-B66-0 1	1
機組	
控計	

承  
資  
品  
機  
組  
計

PUMP DATA SHEET					WORK No.				
1	CUSTOMER				DATE		2020/4/1		
2	USER				AUTH. BY	CHKD BY	MADE BY		
3	EQUIP' T NAME				T. Shimayoshi	M. M	M. Murakami		
4	ORDER No.				REV. DATE	LINE No.	BY		
5	JOB No.								
6	ITEM (PUMP) No.								
7	PUMP NAME								
8	QUANTITY								
9	OPERATING CONDITIONS				CONSTRUCTION				
10	LIQUID				PUMP CODE	MMP21-B66			
11	SLURRY				MAGNET TYPE	R25x6N			
12		(wt%)	(mm)		BEARING	RADIAL :	-	THRUST :	-
13	PH				AUXILIARY PIPING	-			
14	PUMPING TEMP.	(-20~130)		( °C )	NOZZLE	SIZE	RATING	FACING	
15	SPEC. GRAVITY	@P. T.	1		SUCTION	3/4"	R	-	
16	VAPOUR PRESS.	@P. T.			DISCHARGE	3/4"	R	-	
17	VISCOSITY	@P. T.	1	(mPa · s)	IMPELLER DIA. DES.	φ115		(mm)	
18	CAPACITY	1.8	(m3/hr)	30	(l/min)	ROTATION VIEWED FROM CPLG END	<input checked="" type="checkbox"/> CW	<input type="checkbox"/> CCW	
19	DISCH. PRESS.				PERFORMANCE				
20	SUCT. PRESS.				SPEED	3520		(rpm)	
21	DIFF. PRESS.				NPSH REQ'D (WATER)	-		( m )	
22	TOTAL HEAD	24		( m )	DES. EFF.	27		( % )	
23	NPSH AVAIL.				DES. BHP	0.44		( kW )	
24	CASE DES. TEMP.	130	(°C)	PRESS.	0.6	(MPaG)	MIN. CONTINUOUS FLOW	0.24 (m3/hr) 4 (l/min)	
25	INSTALLATION	<input type="checkbox"/>	INDOOR	<input type="checkbox"/>	OUTDOOR				
26	MOTOR				MATERIALS				
27	TYPE	全閉外扇 屋外	FORM	フランジ形	CASING	SCS14			
28					IMPELLER	SUS316			
29	SPEED	3600 (SYN)		(rpm)	BUSHING, THRUST RING	SiC-D, SiC			
30	VOLTS/CYCLE	200	( V )	60	( Hz )	SHAFT (HF)	SiC ( - )		
31	RATED OUTPUT/POLES	0.55	( kW )	2	( P )	GASKET	PTFE		
32	FRAME	71	MFR.	BROOK	O RING	---			
33	PUMP PAINTING								
34	COLOR	BODY:	2.5PB4/10	COVER:	---				
35	REMARKS								
36									
37									
38									
39									
40									



# 〈試験成績表〉

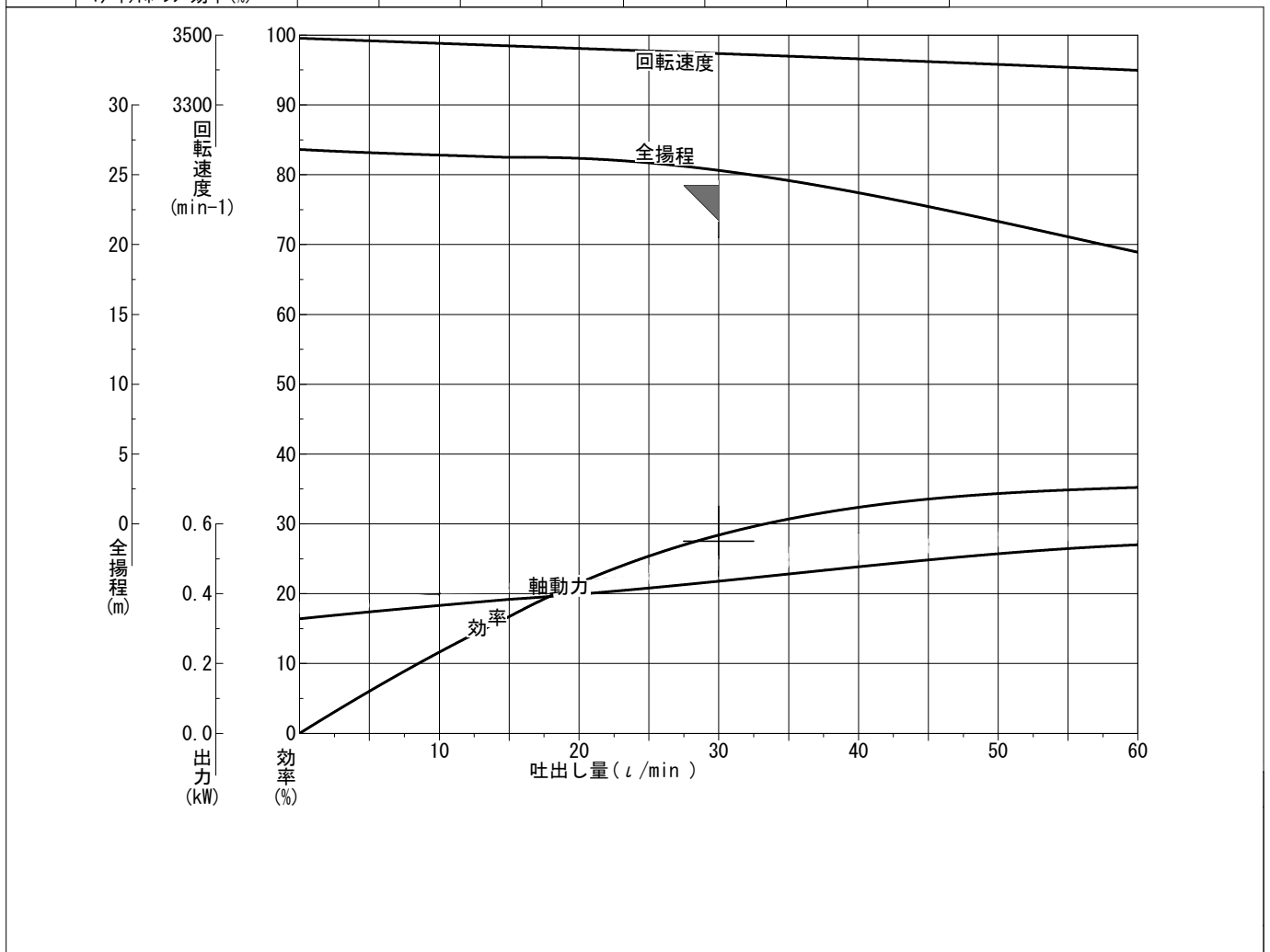
CODE : MMP21-B64/B66  
 PUMP TYPE : MMP  
 PUMP SIZE : 21

発行日 : 2019.05.13  
 Rev.1 : 2020.04.01  
 Rev.2 : 2022.10.06

規格要目	指定揚液 (温度 [°C]、比重、粘度)	吐出量 (L/min)	全揚程 (m)	回転速度 (min-1)	原動機出力 (kW)	NPSH <sub>av</sub> /Req (m)
	22/1 /1 [mPa·s]	30	24	3520	0.55	-/-

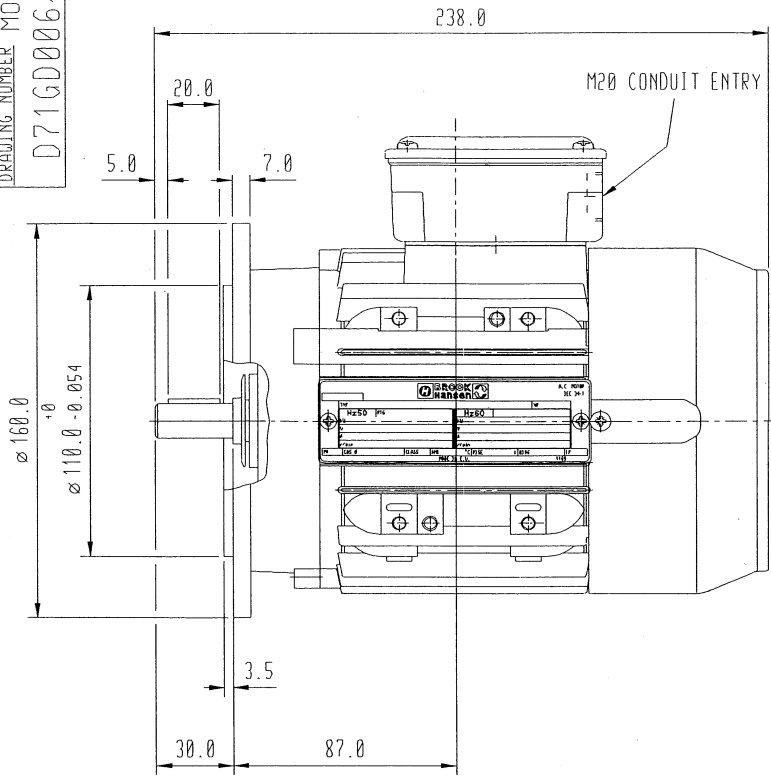
計測項目		1	2	3	4	5	6	7	8
回転速度 (min-1)		3491	3469	3447	3424	3399			
水温 (°C)		16.0	16.0	16.0	16.0	16.0			
吐出量	測定器の読み (L/min)	0.0	15.0	30.0	45.0	60.0			
	吐出量 (L/min)	0.0	15.0	30.0	45.0	60.0			
揚程	吐出しヘッド (m)	27.2	26.6	25.6	22.9	19.5			
	吸込ヘッド (m)	0.39	0.36	0.29	0.18	0.05			
	測点高差 (m)	0.00	0.00	0.00	0.00	0.00			
	速度ヘッド (m)	0.000	0.000	0.000	0.000	0.000			
	全揚程 (m)	26.8	26.2	25.3	22.7	19.5			
理論動力 (kW)		0.000	0.064	0.124	0.167	0.190			
周波数 (Hz)		60.0	60.0	60.0	60.0	60.0			
電動機	電圧 (V)	200.0	200.0	200.0	200.0	200.0			
	電流 (A)	1.567	1.740	1.917	2.146	2.324			
	入力 (kW)	0.422	0.499	0.572	0.660	0.725			
	効率 (%)	77.8	76.9	76.2	75.3	74.5			
	出力 (kW)	0.328	0.384	0.436	0.497	0.540			
軸動力 (kW) (比重=1)		0.328	0.384	0.436	0.497	0.540			
ポンプ効率 (%)		0.0	16.7	28.4	33.5	35.2			
回転換算	吐出量 (L/min)								
	全揚程 (m)								
	軸動力 (kW)								
粘度換算	吐出量 (L/min)								
	全揚程 (m)								
	軸動力 (kW)								
	ポンプ効率 (%)								
	マグネットポンプ効率 (%)								

電動機要目	
形式	W-DA71SK-D
出力	( 0.55 kW)
周波数 (Hz)	( 60 Hz)
電圧	( 200 V)
電流	( 2.46 A)
極数	( 2 P)
回転速度	( 3440min-1)
製造番号	DJ167410
製造業者名	BROOK
試験揚液	常温清水
吐出量測定方法	電磁流量計
室温	( 17 °C)
連続運転時間	( 60 min)
軸受温度	
軸継手側	( - °C)
反対側	( - °C)
インペラー径	( 115.0 mm)
マグネット形式	R25x6N
キャンロス	( 0.050 kW)
備考	
試験者名	東田
製造業者名	三和ハイドロテック(株)

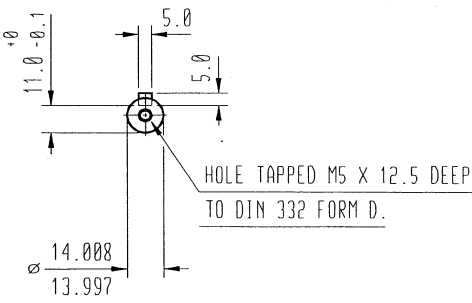
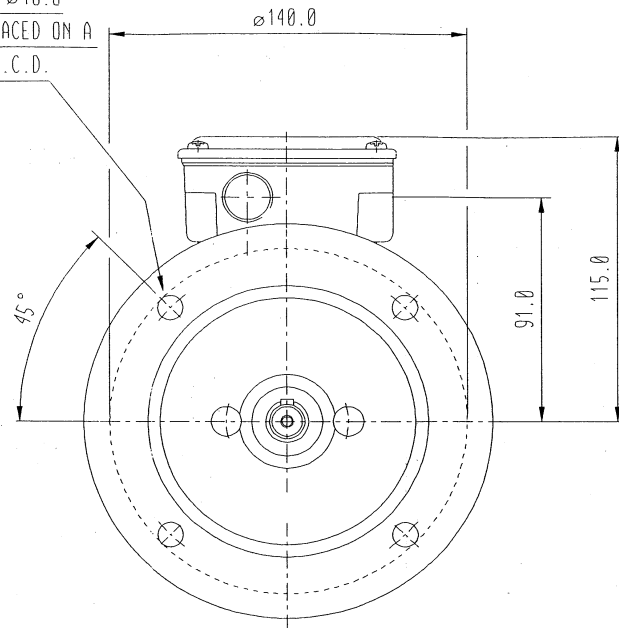


DRAWING NUMBER MOD A  
D71GD006/0

REF: A3NEW




4 HOLES  $\varnothing 10.0$   
EQUI-SPACED ON A  
130.0 P.C.D.



TERMINAL BOX CAN BE ARRANGED IN 9 OR 6 O-CLOCK POSITIONS.  
CONDUIT ENTRY CAN BE ARRANGED IN 4 ALTERNATIVE POSITIONS.  
ALL DIMENSIONS IN MILLIMETRES.

CUSTOMER		
ORDER No.		
SERIAL No.	P382162/81	
FRAME SIZE	W-DA71SK-D	
KW.	0.55	RPM.
Hz		PHASE 3
VOLTS	200	POLES 2
BRGS.	6003 ZZ	DE. 6003 ZZ NDE.
MOTOR NETT WT.	6.5	Kg.

SPECIAL REMARKS  
TOTALLY ENCLOSED IP55 (HOSEPROOF)  
'W' ALUMINIUM  
IC411 FAN VENTILATED  
FLANGE, NO FEET, B5

  
 HUDDERSFIELD HD1 3LJ ENGLAND  
 14 NOVEMBER 2001

ALL DIMENSIONS IN MILLIMETRES





**Brook Crompton**  
 Small Industrial Motors  
 Huddersfield, W. Yorkshire, HD1 3LJ

SHEET SIZE <b>A3</b>	TITLE			
	OUTLINE DIMENSIONS OF T.E.F.V. D71S FRAME ALUMINIUM 'D' FLANGE MOUNTED 3 PHASE MOTOR.			

	NAME	DATE
DRAWN	DJR	4-9-95
CHECKED	RS	4-9-95
SCALE	1:2	

DRG. No.	MOD A
D71GD006/0	
REVISION:	DATE